

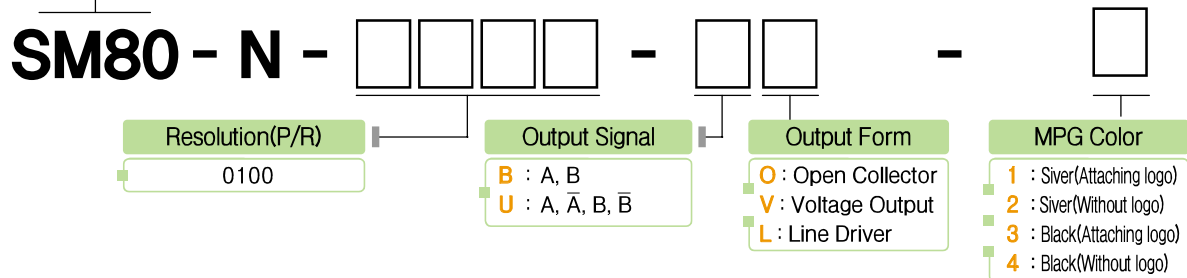
SM80 Series

- Features : NC tooling machine, Industrial application
High reliability, Customized logo can be available
Half permanent durability →

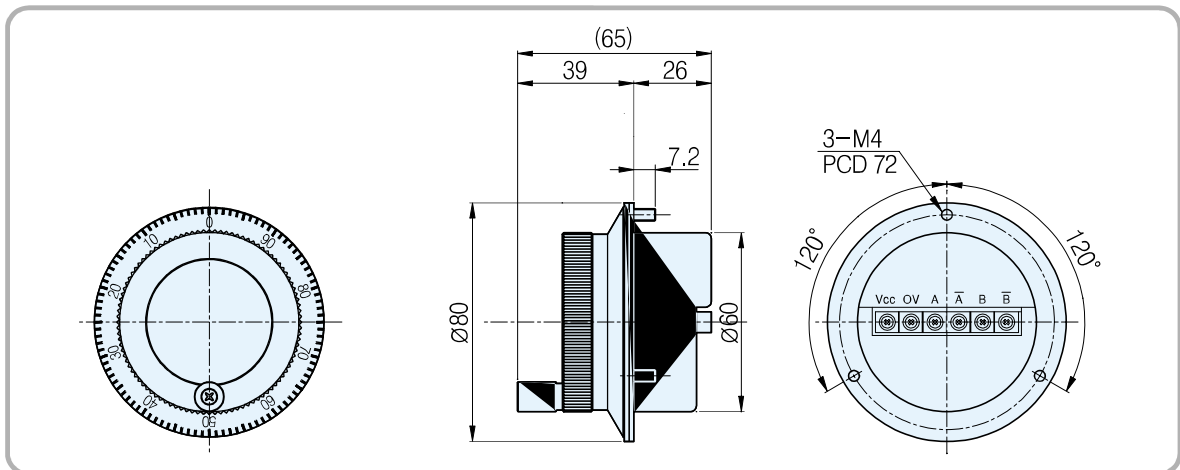


Model

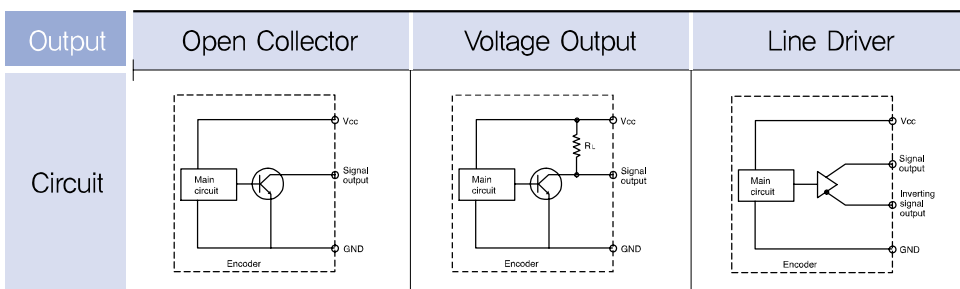
MANNUAL
PULSE GENERATOR
Outer Diameter Ø80



External Dimension



Output Circuit



Electrical Spec.

Output type	Open Collector	Voltage Output	Line Driver
Power Supply	DC +5[V] Ripple p-p : less than 5%		
Consuming Current (In case of no load)	70mA Max	70mA Max	150mA Max
Maximum Response Frequency	5 KHz MAX	5 KHz MAX	5 KHz MAX
Output voltage	Less than V_L 0.5[V] / More than V_H 2.5[V]		
Output current	Less than 20mA	Less than 20mA	Less than 20mA
Rising, decline time	Less than 0.1 μ s	Less than 0.1 μ s	Less than 0.1 μ s
Common conditions	In case that the cable length of output side is 1[M] and load resistance is less than 1[k Ω]		

Mechanical Spec.

Starting Torque	50g – cm Max
Maximum number of revolution	600 rpm
Bearing lifetime	50,000[hr](In case of rotating by 600rpm)
Connection Table	6P board
weight	600g

Output Phase Shift

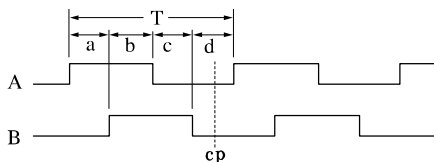
CW → Clockwise viewed from shaft end

$$a + b, c + d = T/2 \pm T/8$$

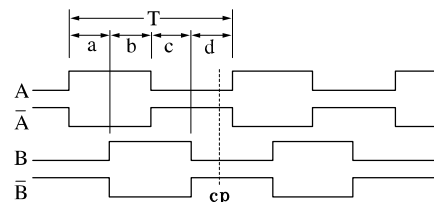
$$a, b, c, d = T/4 \pm T/8$$



Open Collector, Voltage Output



Line Driver



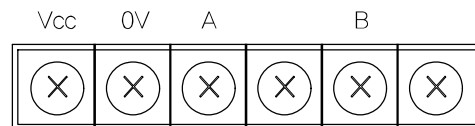
Color	Silver	Black
The logo by color can be attached and detached		

Rigid Spec.

Operating Temp. Range	-10°C ~ +70°C (No freezing)
Preserving temp	-20°C ~ +85°C
Using humidity	35% ~ 80% RH
Preserving Humidity	30% ~ 85% RH
Internal Vibration	5G
Internal Shock	50G
Degree of Protection	IP 50

Connection Table

Cable Configuration
Open Collector, Voltage Output



Line Driver

